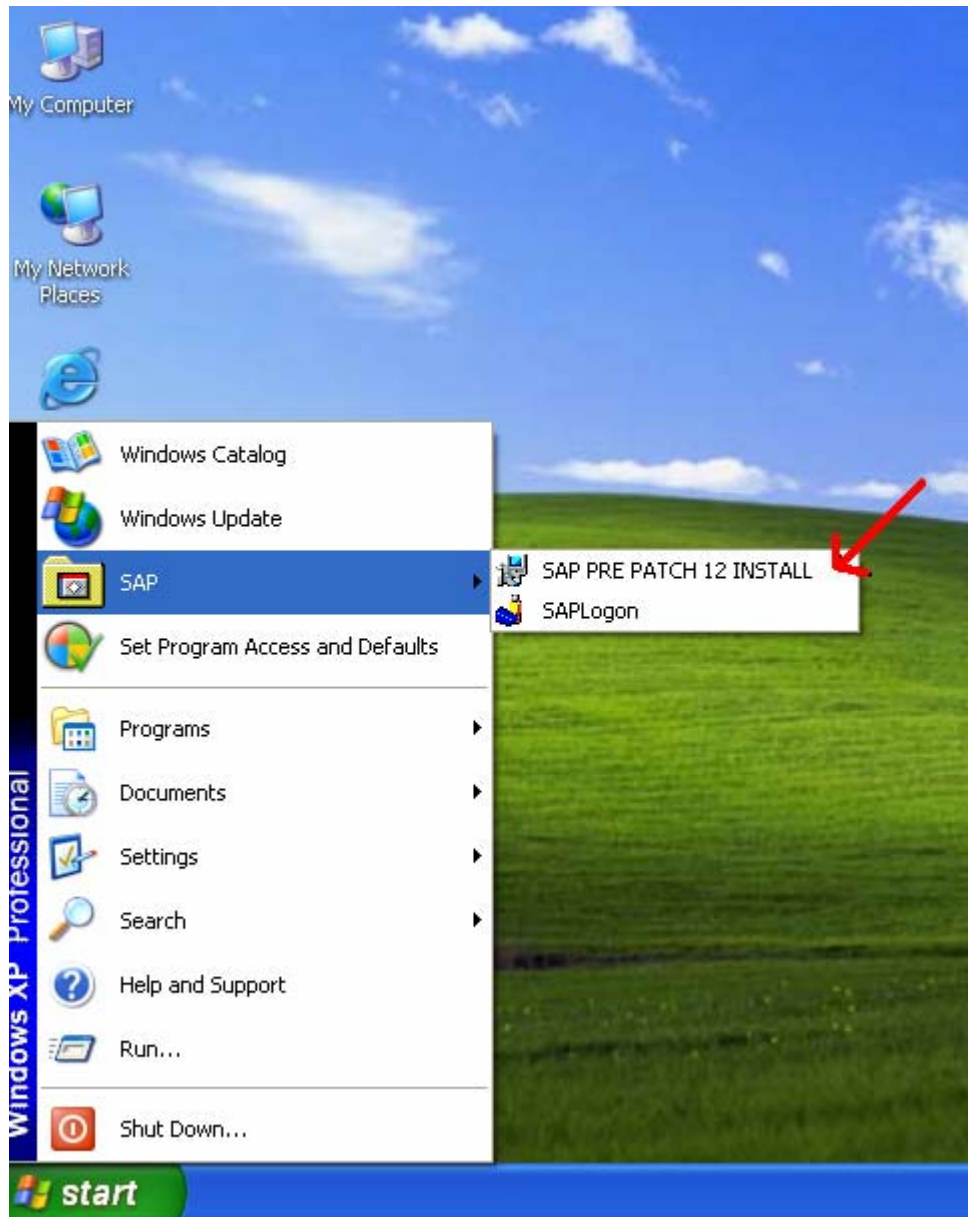


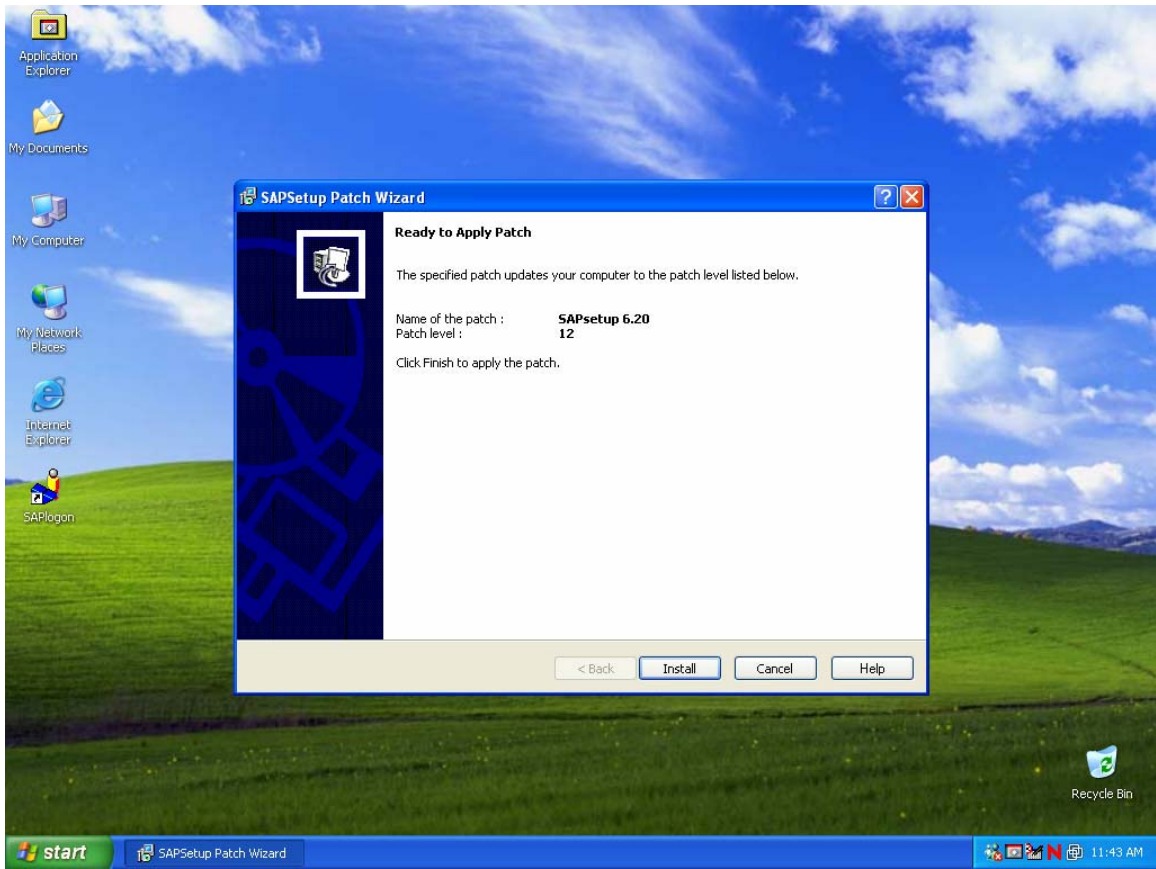
SAP Client Patches

SAP will require two patches to function properly after 9/18/2004. IT has made the patches available across campus. However, these patches **MUST** be done in a consecutive order! The following procedure will ensure the patches are installed properly.

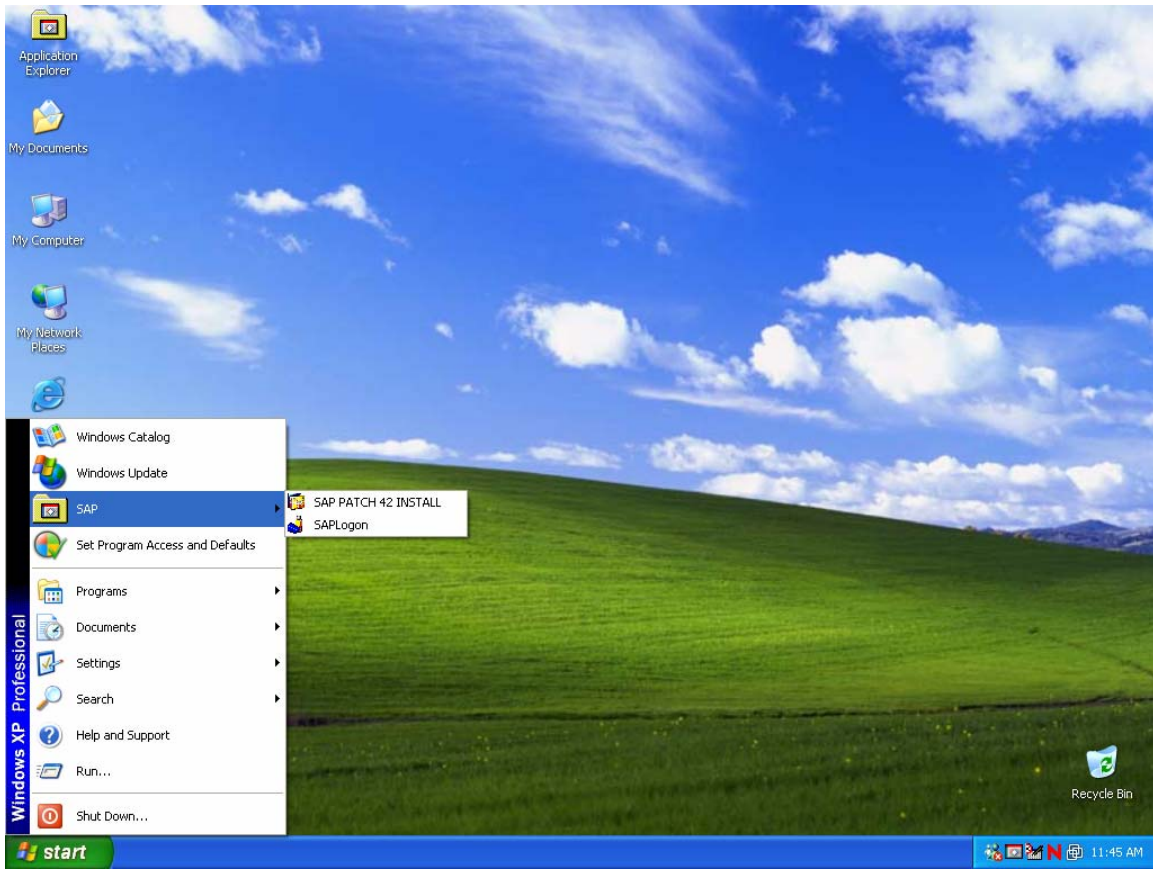
You will see an icon under Start\SAP\ for the first patch labeled SAP PRE PATCH 12 INSTALL. If you see SAP SETUP instead, SAP has not yet been installed on your PC and this will need to be run prior to seeing the patch 12 option.



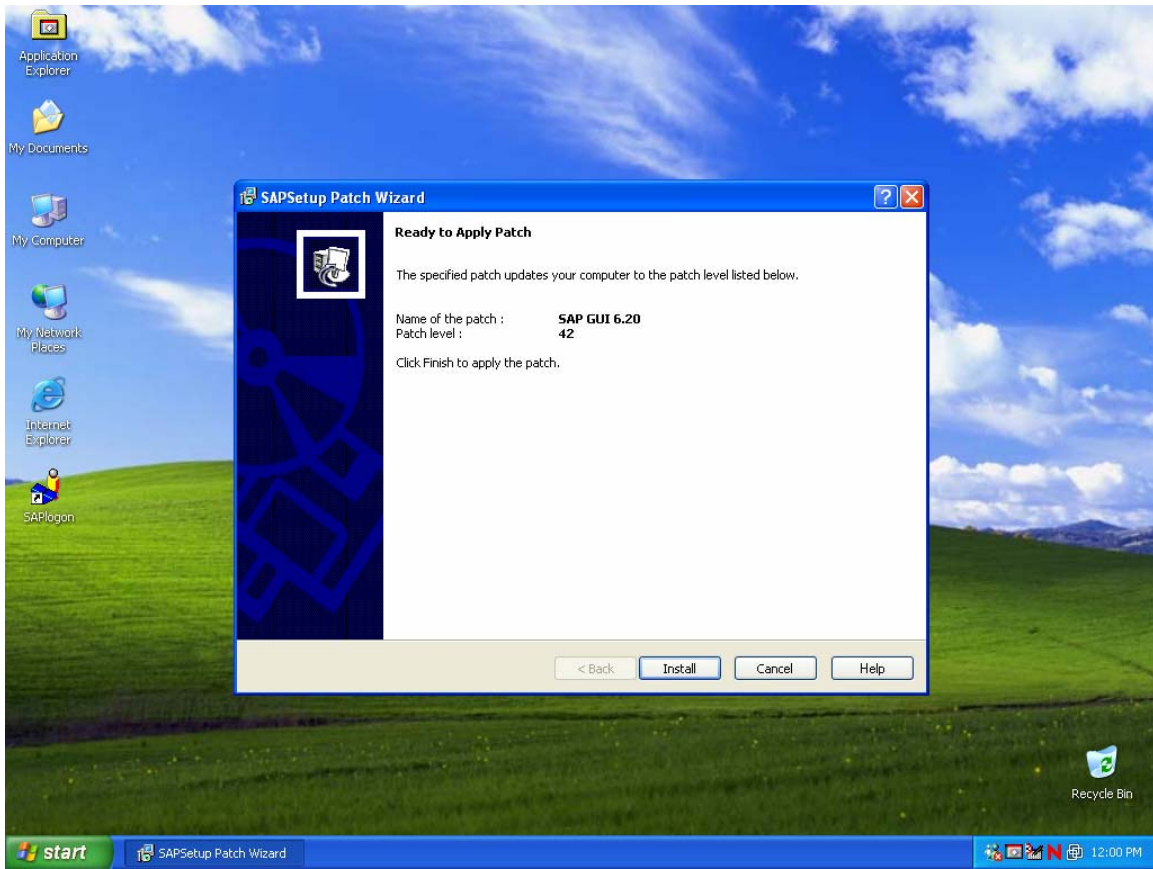
After you click on the SAP PRE PATCH 12 INSTALL you will be prompted with a second installation disclaimer. Click install to continue the process. DO NOT CANCEL AT THIS POINT. This process will take approximately 10 seconds.



After patch 12 is applied, a restart is required. After a restart, you will see under Start\SAP\ the second patch labeled SAP PATCH 42 INSTALL.



After you click on the SAP PATCH 42 INSTALL you will be prompted with a second installation disclaimer. Click install to continue the process. **DO NOT CANCEL AT THIS POINT.** This process will take approximately 3 minutes.



After patch 42 is installed a second restart is required for proper functionality of the SAP client. As always, if you experience any problems, please call the help line at 4357.